



REQUEST FOR PROPOSAL (RFP)

Street Furniture Design Plan

Proposals must be submitted no later than 5:00 P.M. on November 21, 2023. Proposals must include all requested materials to be considered (bid, previous experience, references, etc.). Proposals may be submitted only in the following ways:

There will be an informational session on Monday, September 25, 2023 at Park Central Development 4512 Manchester Suite 100, St. Louis, MO 63110 at 2:00 pm.

Emailed to Brian@pcd-stl.org

OR

Mailed or hand-delivered to the following address:

The Grove Community Improvement District

c/o Brian James

4512 Manchester Avenue, Suite 100

St. Louis, MO 63110

If you have any questions concerning the RFP, please contact Brian James at (314) 678-7762 or brian@pcd-stl.org

The Grove Community Improvement District

4512 Manchester Avenue, 1st Floor: Saint Louis, MO 63110: (314) 535-5311

www.thegrovestl.com



Section I: INTRODUCTION

The Grove Community Improvement District (CID) is seeking proposals from qualified agencies to provide a design plan for street furniture in the CID.

The design and plan is intended to enhance the CID's streetscape experience with consistent, high quality, and aesthetically pleasing street furniture.

The Grove CID has active street frontage that sees high pedestrian usage. The eastern edge of the CID has a park connected to Chroma, a mixed-use development at Manchester Avenue and Chouteau Avenue, that includes some street furniture generally meant for the businesses and residents. Throughout the CID, there are not many other areas with a strong presence of public street furniture. There are a number of businesses that use their patio for guests to sit along Manchester Avenue and this RFP seeks to create more opportunities for pedestrians walking along Manchester to rest, enjoy the streetscape, and play.

The selection of the successful agency will be made based on the quality and expertise of their proposed team, the general approach they propose for the design and implementation of the street furniture plan, and the cost-effectiveness of their offering.

Bids must include the provision of all requirements listed below. The RFP establishes the information to be included in the Agency's bid response. The selection of the successful agency will be made based on evaluation of the agency's ability to deliver all requirements in a cost-effective manner.

The Grove CID's Board of Directors is not obligated to accept the lowest bid and reserves the right to reject any or all bids or to amend the scope of the project. All bidders must be duly licensed or otherwise be able to perform work in accordance with all governing local authorities and to the satisfaction of those authorities.

Section II: CONTRACT TERMS

Agency shall complete the scope of work outlined below by a date as approved by the Grove CID Board of Directors.

The Grove Community Improvement District

4512 Manchester Avenue, 1st Floor: Saint Louis, MO 63110: (314) 535-5311

www.thegrovestl.com



Section III: OBJECTIVES

Agency should consider the following objectives relating to the street furniture plan:

- Enhance streetscape experience for pedestrians, including an increased sense of safety for those traveling within the district by foot, bicycle, vehicle or other means.
- Activate the streetscape to attract greater foot traffic and improve the comfort and usability of public gathering spaces.
- Achieve a recognizable design identity, creating a unique character in The Grove CID
- Street furniture should be functional and made from durable materials.
- Establish a clear pedestrian right-of-way, specify furniture size that is responsive to the width of pedestrian ways, and select furnishings that reflect use patterns and placement opportunities.
- Maintain a clear line of sight at intersections and consider surrounding context.
- Show mindfulness of all users of the street, including conscious design that is safe and welcoming for families while also being accessible to anyone who might need to access the furniture.
- Engagement with the CID on ensuring that the street furniture reflects the wishes of the community.

The Grove Community Improvement District

4512 Manchester Avenue, 1st Floor: Saint Louis, MO 63110: (314) 535-5311

www.thegrovestl.com



Section IV: SCOPE OF SERVICES

- I. Agency will provide a **comprehensive design** for the Grove CID incorporating the following elements, including specific models, their location within the streetscape, and description of their functionality where applicable. Agency is not required to incorporate all of these features, as long as the design meets the overall objectives of the streetscape plan.
 1. Street Furniture
 - Benches
 - Tables
 - Other
 2. Bicycle Infrastructure
 - Bicycle racks
 - Bicycle corrals
 - Other
 3. Public Art
 - Opportunities to accompany existing and potential future murals
 - Identifying areas of the CID for features such as sculptures and painting of streetscape features (such as traffic cabinets or fire hydrants)
 - Other
 4. Identifying Waste Management Features and Any Lack in Service
 - Trash cans
 - Recycling bins
 - Pet waste stations
 - Cigarette butt urns
 - Other
 5. Any other furnishings recommended by Agency
- II. Agency will provide an **estimate detailing cost** of all elements of the proposed street furniture design including purchase, construction, installation, and maintenance.
- III. Agency will provide a description of their **comprehensive design approach and functionality of the design** including how it will:
 1. Activate the streetscape for pedestrian traffic.
 2. Improve the experience of walking the district.
 3. Improve pedestrian safety.

The Grove Community Improvement District

4512 Manchester Avenue, 1st Floor: Saint Louis, MO 63110: (314) 535-5311

www.thegrovestl.com



- IV. Agency will perform **information gathering and community engagement** to determine the community's desired form and function of the streetscape.

- V. Agency will **complete the scope of work outlined here by a date as approved** by the Grove CID Board of Directors.

The Grove Community Improvement District

4512 Manchester Avenue, 1st Floor: Saint Louis, MO 63110: (314) 535-5311

www.thegrovestl.com



Section VI: INSTRUCTIONS TO BIDDERS

Bidder is to address the following subjects in the response. Reference any attachments in the text and include printed copies of attachments at the back of your submitted document.

1. Company History and Organization

Provide a brief Agency history. Explain ownership and include name and title of the personnel who would be directly responsible for the management and supervision of this project.

2. Management Approach

Describe in detail how your Agency will be organized to manage this project, including any subcontractors who will handle portions of the scope of work. Indicate by position or title the person who will have the overall responsibility for the supervision of account.

3. Description of Service Offering

Provide a detailed description of services as outlined in sections I and II of the Scope of Work.

4. Cost Estimates

Administer all cost accounting and billing relative to this contract.

- I. Provide a cost proposal for the scope of work not to exceed an amount as approved by the Grove CID Board of Directors.

5. Timeline for Completion of Scope of Work

Provide a timeline laying out dates for the completion of all aspects of the scope of work.

6. References

Provide at least three (3) references for whom contracts of a similar scope have been completed. Include reference name, address, and contact number.

The Grove Community Improvement District

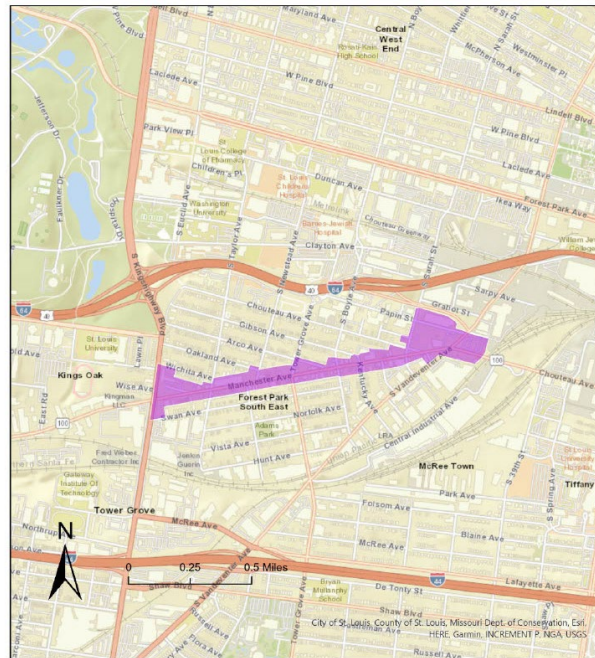
4512 Manchester Avenue, 1st Floor: Saint Louis, MO 63110: (314) 535-5311

www.thegrovestl.com

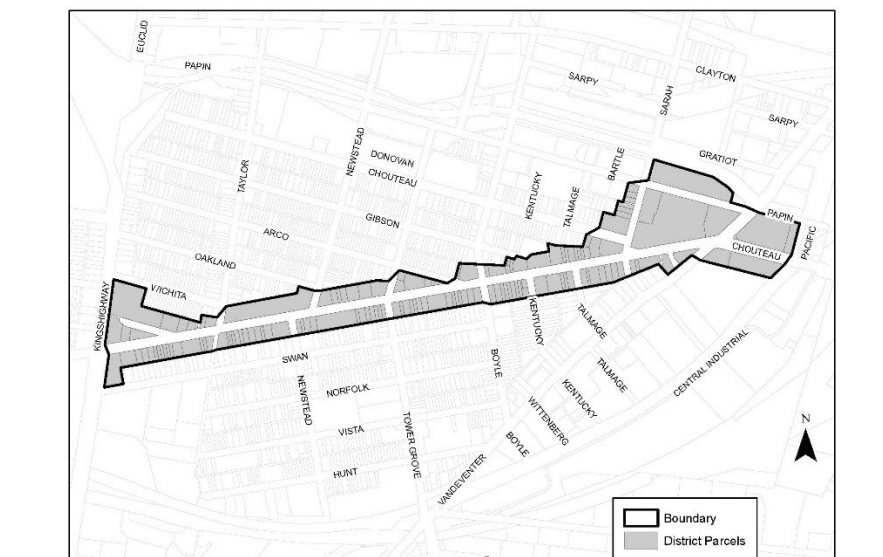


Appendix A: Grove CID Community Improvement District Maps

Grove CID Boundary



The Grove CID



The Grove Community Improvement District

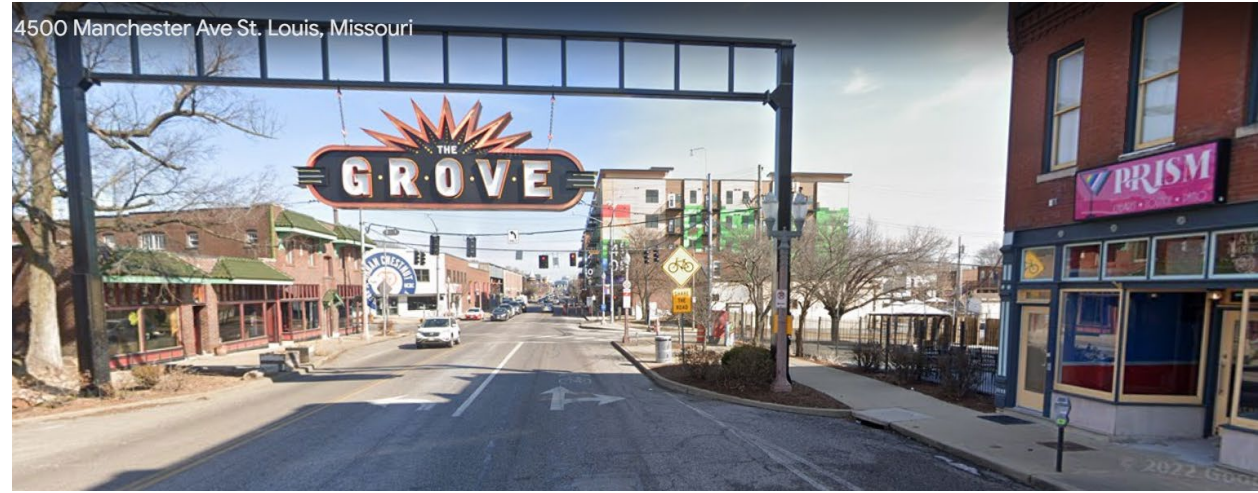
4512 Manchester Avenue, 1st Floor: Saint Louis, MO 63110: (314) 535-5311

www.thegrovestl.com

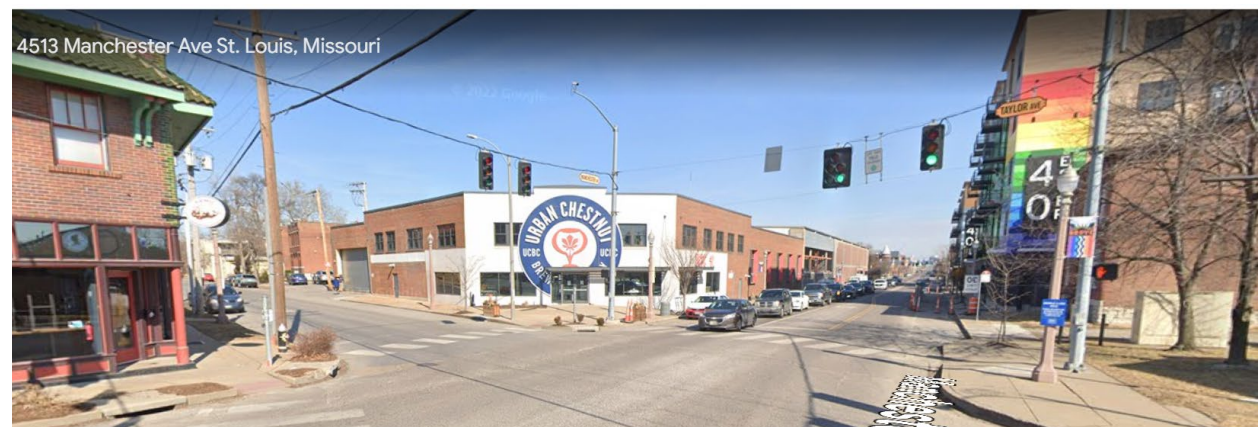


Appendix B: Current Grove CID Street Photos

Manchester Avenue at Western Grove Sign



Manchester Avenue at Taylor Avenue



The Grove Community Improvement District

4512 Manchester Avenue, 1st Floor: Saint Louis, MO 63110: (314) 535-5311

www.thegrovestl.com



Manchester Avenue at Newstead



Manchester Avenue at Tower Grove



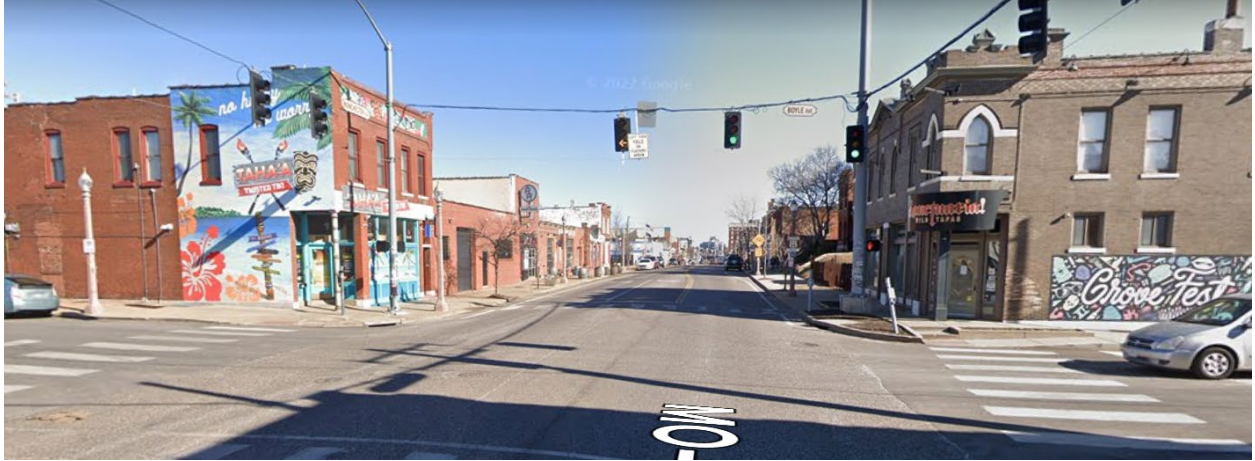
The Grove Community Improvement District

4512 Manchester Avenue, 1st Floor: Saint Louis, MO 63110: (314) 535-5311

www.thegrovestl.com



Manchester Avenue at Boyle



Manchester Avenue at Kentucky



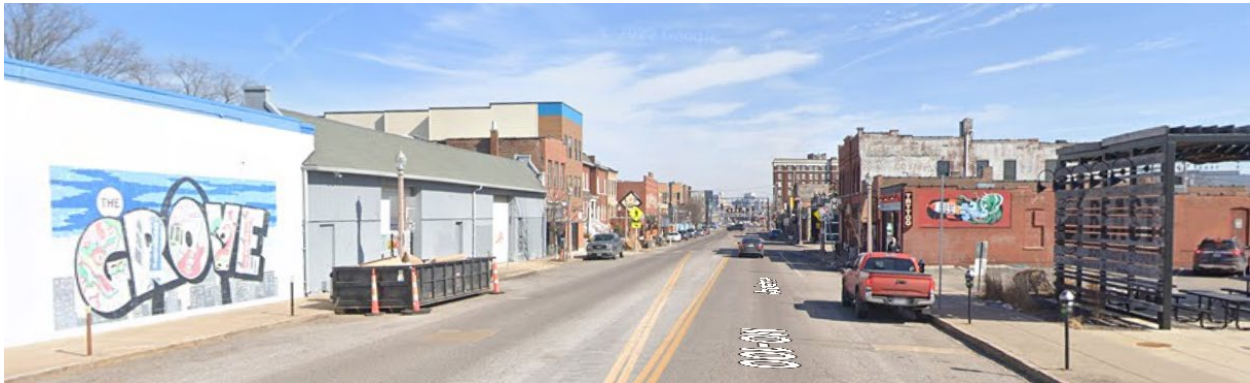
The Grove Community Improvement District

4512 Manchester Avenue, 1st Floor: Saint Louis, MO 63110: (314) 535-5311

www.thegrovestl.com



Manchester Avenue between Kentucky and Talmage



Manchester Avenue at Talmage



The Grove Community Improvement District

4512 Manchester Avenue, 1st Floor: Saint Louis, MO 63110: (314) 535-5311

www.thegrovestl.com



Manchester Avenue at Sarah



Manchester Avenue looking west from the eastern Grove sign



The Grove Community Improvement District

4512 Manchester Avenue, 1st Floor: Saint Louis, MO 63110: (314) 535-5311

www.thegrovestl.com